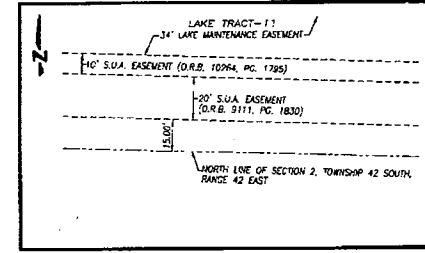
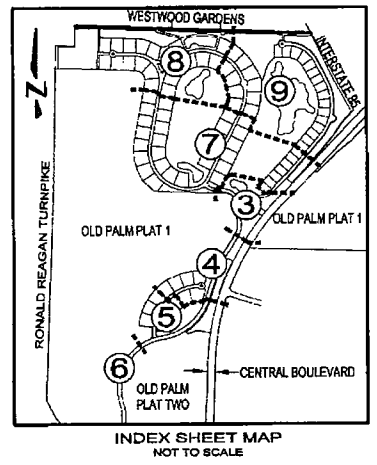
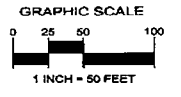
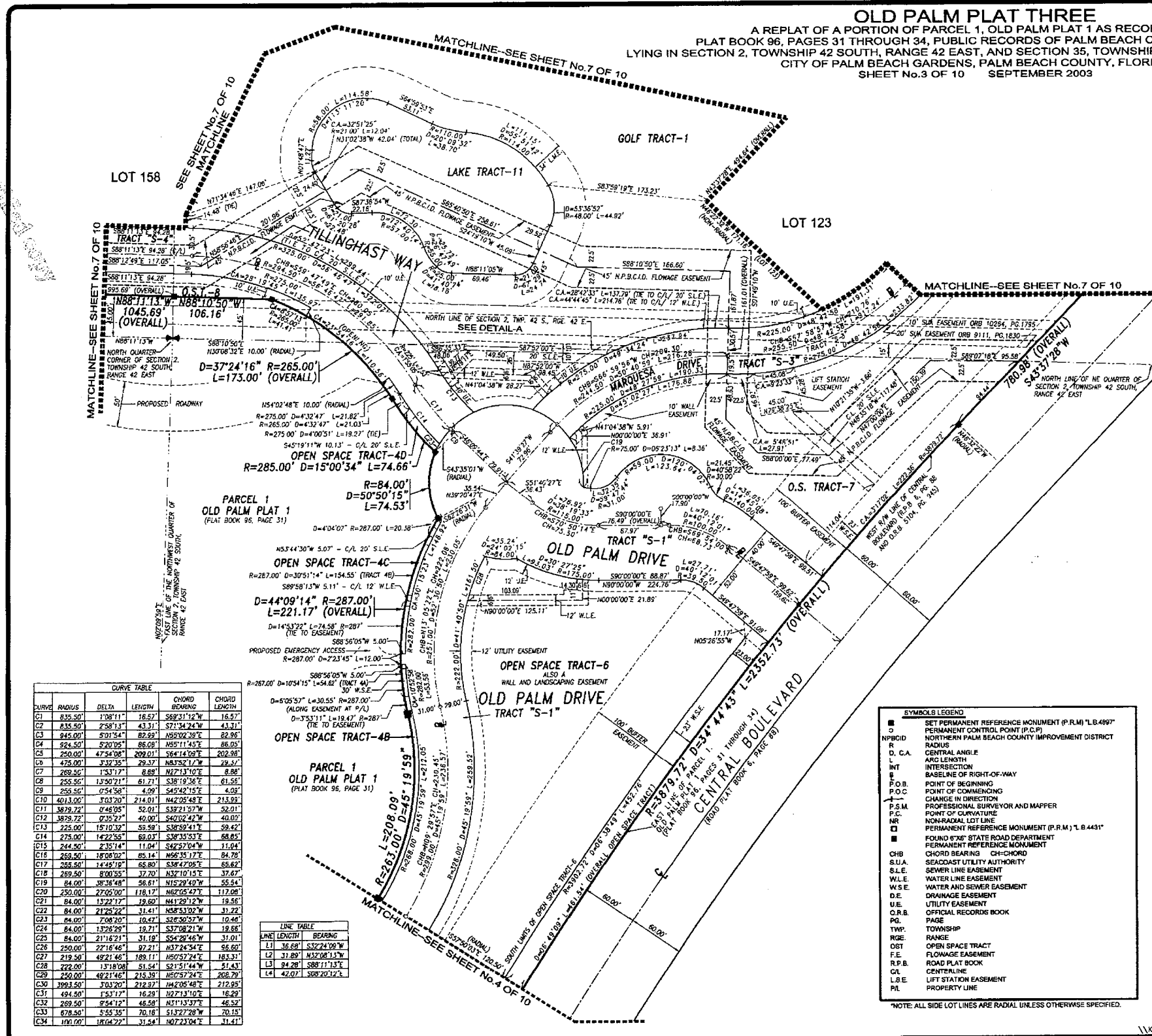


OLD PALM PLAT THREE  
A REPLAT OF A PORTION OF PARCEL 1, OLD PALM PLAT 1 AS RECORDED IN  
PLAT BOOK 96, PAGES 31 THROUGH 34, PUBLIC RECORDS OF PALM BEACH COUNTY, FLORIDA  
LYING IN SECTION 2, TOWNSHIP 42 SOUTH, RANGE 42 EAST, AND SECTION 35, TOWNSHIP 41 SOUTH, RANGE 42 EAST,  
CITY OF PALM BEACH GARDENS, PALM BEACH COUNTY, FLORIDA  
SHEET No. 3 OF 10 SEPTEMBER 2003



**CURVE TABLE**

CURVE	RADIUS	DELTA	LEVOTH	CHORD BEARING	CHORD LENGTH
C1	835.50'	1708.11"	16.57'	S89°31'12"W	16.57'
C2	835.50'	1708.11"	43.31'	S71°34'24"W	43.31'
C3	845.00'	1731.54"	82.89'	S50°02'30"E	82.89'
C4	824.50'	1720.05"	86.08'	N55°11'45"E	86.08'
C5	250.00'	475.40"	209.01'	S64°14'09"E	202.98'
C6	475.00'	1732.35"	29.37'	N83°52'17"W	29.37'
C7	269.50'	1531.71"	8.89'	N27°13'10"E	8.89'
C8	255.50'	1390.71"	61.21'	S36°19'36"E	61.95'
C9	255.50'	1390.71"	4.29'	S45°42'15"E	4.29'
C10	4013.00'	1703.20"	214.01'	N42°05'48"E	213.92'
C11	3878.72'	1746.05"	52.01'	S32°21'57"W	52.01'
C12	3878.72'	1746.05"	40.00'	S40°02'42"W	40.00'
C13	225.00'	1510.32"	55.59'	S36°59'41"E	59.42'
C14	275.00'	1422.55"	69.03'	S36°35'53"E	68.65'
C15	244.50'	1235.14"	11.94'	S42°52'04"W	11.94'
C16	268.50'	1808.02"	85.14'	N66°35'17"E	84.78'
C17	268.50'	1808.02"	65.80'	S36°42'05"E	65.62'
C18	269.50'	1800.55"	37.70'	N32°10'15"E	37.47'
C19	84.00'	3836.48"	56.61'	N15°29'40"W	55.54'
C20	250.00'	2705.00"	116.17'	N62°05'47"E	117.09'
C21	84.00'	1322.12"	19.60'	N41°29'12"W	19.56'
C22	84.00'	2125.22"	31.41'	N58°53'02"W	31.22'
C23	84.00'	706.20"	10.47'	S26°30'57"W	10.46'
C24	84.00'	1326.29"	18.71'	S37°08'21"W	18.66'
C25	84.00'	2116.21"	31.18'	S54°28'46"W	31.01'
C26	250.00'	2216.48"	97.21'	N37°24'34"E	96.60'
C27	219.50'	4921.46"	188.11'	N50°57'24"E	183.37'
C28	222.00'	1318.06"	51.54'	S1°51'44"W	51.43'
C29	250.00'	4921.46"	215.39'	N60°57'24"E	208.79'
C30	3993.50'	1013.20"	212.97'	N42°05'48"E	212.95'
C31	494.50'	1531.71"	16.29'	N27°13'10"E	16.29'
C32	269.50'	1531.71"	46.58'	N11°13'37"E	46.52'
C33	678.50'	555.35"	70.18'	S13°27'28"W	70.15'
C34	191.00'	1816.22"	31.64'	N67°23'04"E	31.41'

**LINE TABLE**

LINE	LENGTH	BEARING
L1	36.68'	S32°24'39"W
L2	31.29'	S52°08'17"W
L3	94.28'	S88°11'13"E
L4	42.07'	S88°20'12"E

**SYMBOLS LEGEND**

- SET PERMANENT REFERENCE MONUMENT (P.R.M.) "L.B.499"
- PERMANENT CONTROL POINT (P.C.P.)
- NPBCID NORTH PALM BEACH COUNTY IMPROVEMENT DISTRICT
- D, C.A. CENTRAL ANGLE
- R RADIUS
- INT INTERSECTION
- S BASELINE OF RIGHT-OF-WAY
- P.O.B. POINT OF BEGINNING
- P.O.C. POINT OF COMMENCING
- CHG CHANGE IN DIRECTION
- P.S.M. PROFESSIONAL SURVEYOR AND MAPPER
- P.C. POINT OF CURVATURE
- NR NON-RADIAL LOT LINE
- PERMANENT REFERENCE MONUMENT (P.R.M.) "L.B.4431"
- FOUND 6"x6" STATE ROAD DEPARTMENT PERMANENT REFERENCE MONUMENT
- CHD CHORD BEARING
- S.U.A. SEACAST UTILITY AUTHORITY
- S.L.E. SEWER LINE EASEMENT
- W.L.E. WATER LINE EASEMENT
- W.S.E. WATER AND SEWER EASEMENT
- D.E. DRAINAGE EASEMENT
- U.E. UTILITY EASEMENT
- C.R.B. OFFICIAL RECORDS BOOK
- PG. PAGE
- TWP. TOWNSHIP
- RGE. RANGE
- OST. OPEN SPACE TRACT
- F.E. FLOWAGE EASEMENT
- R.P.B. ROAD PLAT BOOK
- CL. CENTERLINE
- L.S.E. LIFT STATION EASEMENT
- PL. PROPERTY LINE

NOTE: ALL SIDE LOT LINES ARE RADIAL UNLESS OTHERWISE SPECIFIED.

**Keshavarz & Associates, Inc.**  
CONSULTING ENGINEERS - SURVEYORS  
711 N. Dixie Highway, Suite 201  
West Palm Beach, Florida 33401  
Tel: (561) 689-8600 Fax: (561) 689-7476 LB 4897  
THIS INSTRUMENT WAS PREPARED BY MARTINE A. O'NEILL, P.S.M.  
PROFESSIONAL SURVEYOR AND MAPPER NO. 4602  
IN THE OFFICE OF KESHAVARZ & ASSOCIATES, INC.